

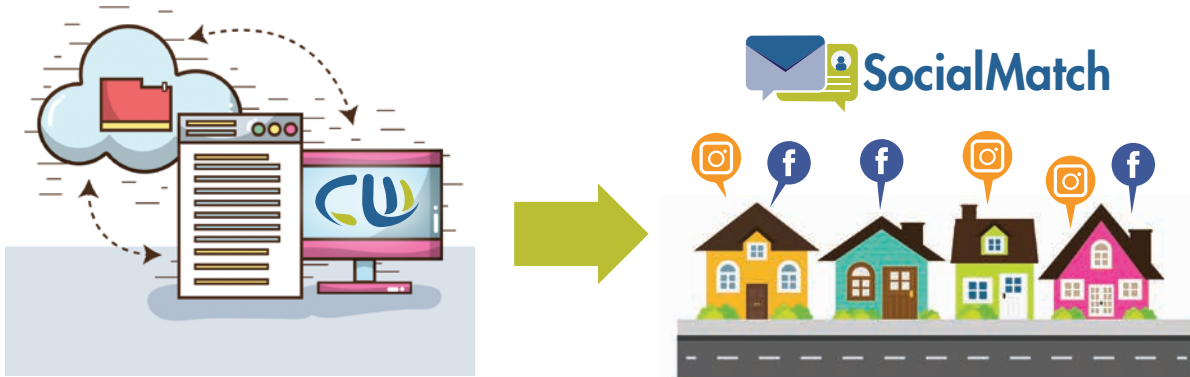
SocialMatch



Increase your conversion like never before with SocialMatch.

Match your mailing list with your Facebook and Instagram user accounts. Your target market will not only receive the mailing, but will be delivered the SAME message on their social feeds, even before they visit your client's website online. This means a higher conversion rate for your campaign!

80% of sales are made between the 8th and 12th contact. Social Match allows you to reach interested prospects at yet another activation point.



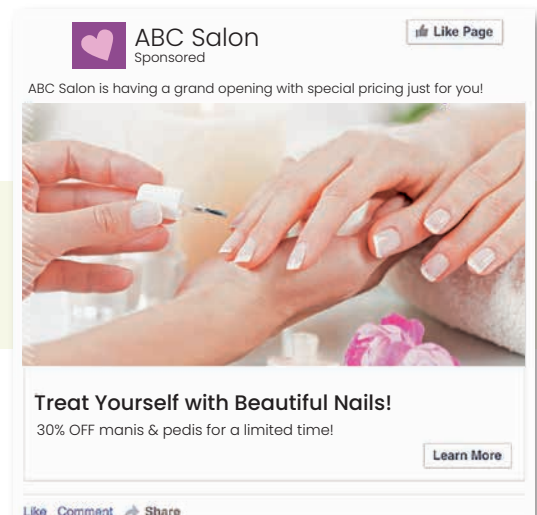
SocialMatch Allows You To:

- Maximize the use of your mailing list.
- Help the people from your list familiarize themselves with your brand before the mail hits.
- Generate thousands of additional social impressions when you show your audience online ads, even without the need of them visiting your site first!

What SocialMatch Looks Like:



YOUR POSTCARD



YOUR AD ON SOCIAL MEDIA

Marketing repetition is crucial to its success, and Social Match offers repetition like never before.



SocialMatch

CAMPAIGN CALENDAR

SEPTEMBER						
Sunday	Monday	Tuesday	Wednesday	Thursday	Friday	Saturday
	28 	29 	30 	31 	1 	2
3 	4 	5 	6 	7 	8 	9
10 	11 	12	13	14	15	16
17	18	19	20	21	22	23
24	25	26	27	28	29	30

Increase Your Conversion Rate with SocialMatch!

SocialMatch is a 14-day program which will begin on the mail date.



= MAIL OUT DATE



= MAIL HITS



= SOCIALMATCH



= GOOGLE & SOCIAL MEDIA FOLLOW-UP



COLORWORKS

480 County Line Road • Gilbertsville, PA 19525
610.367.7599 • 800.243.0171 | colorworksinc.com